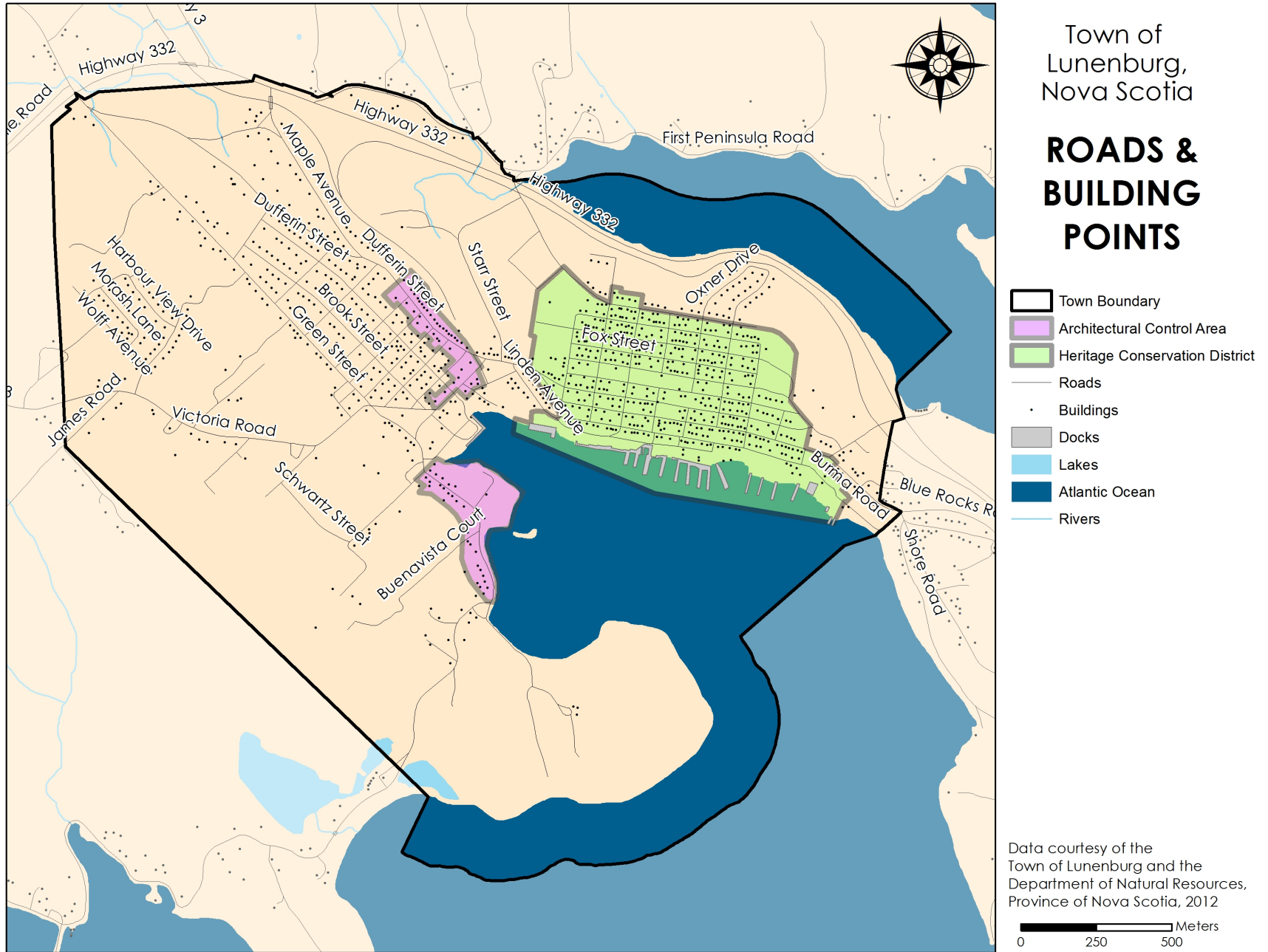
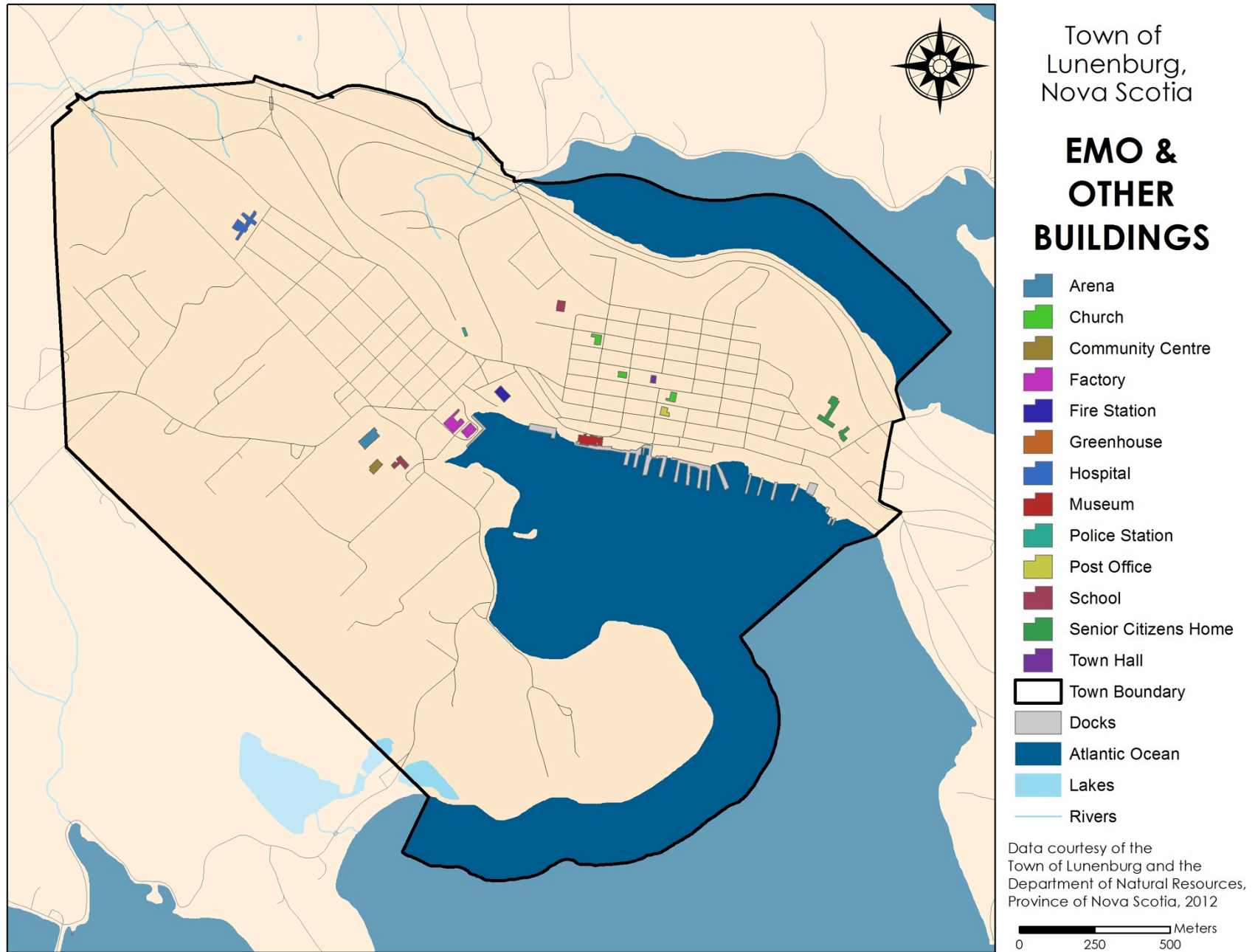


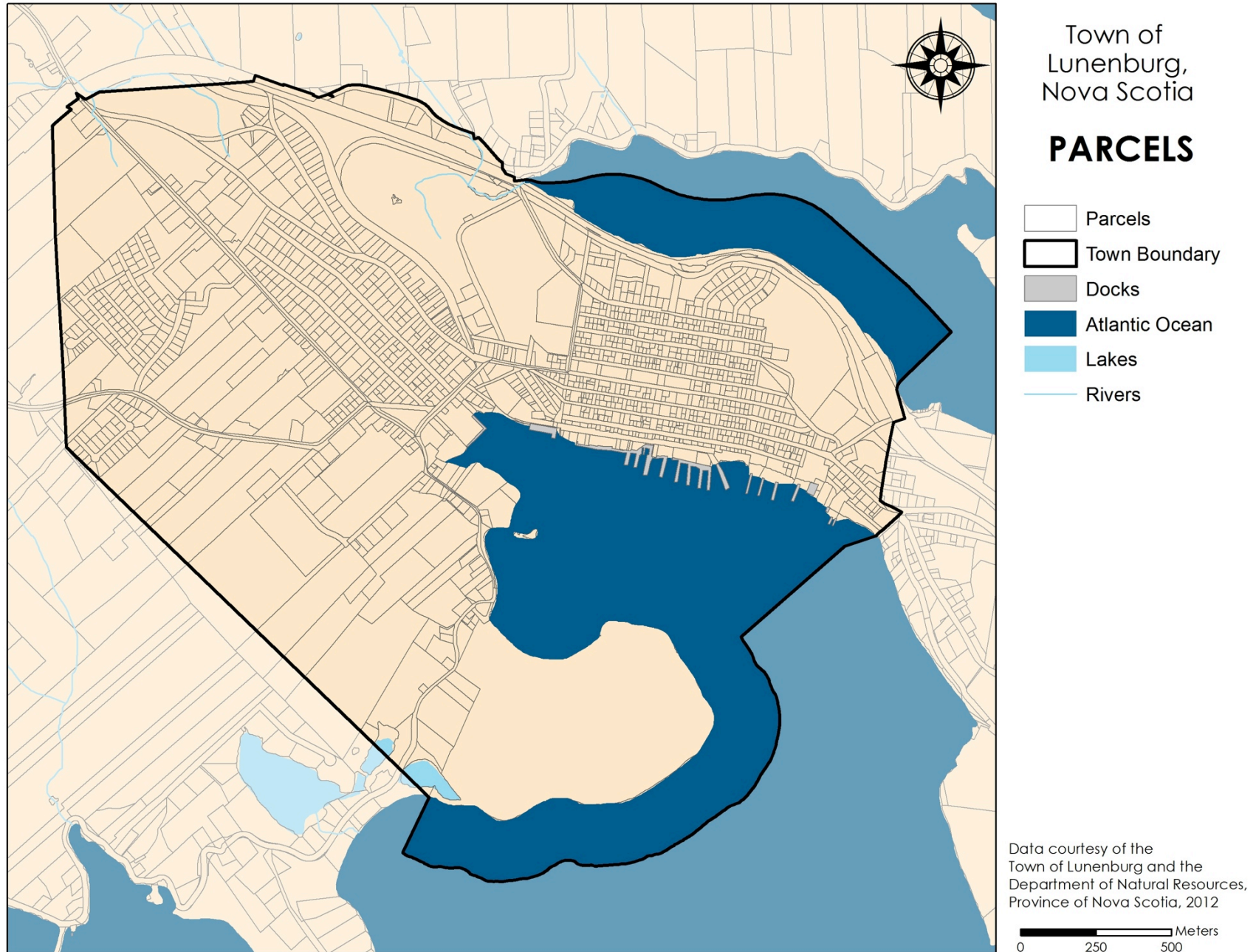
Appendix D: Built Environment Inventory

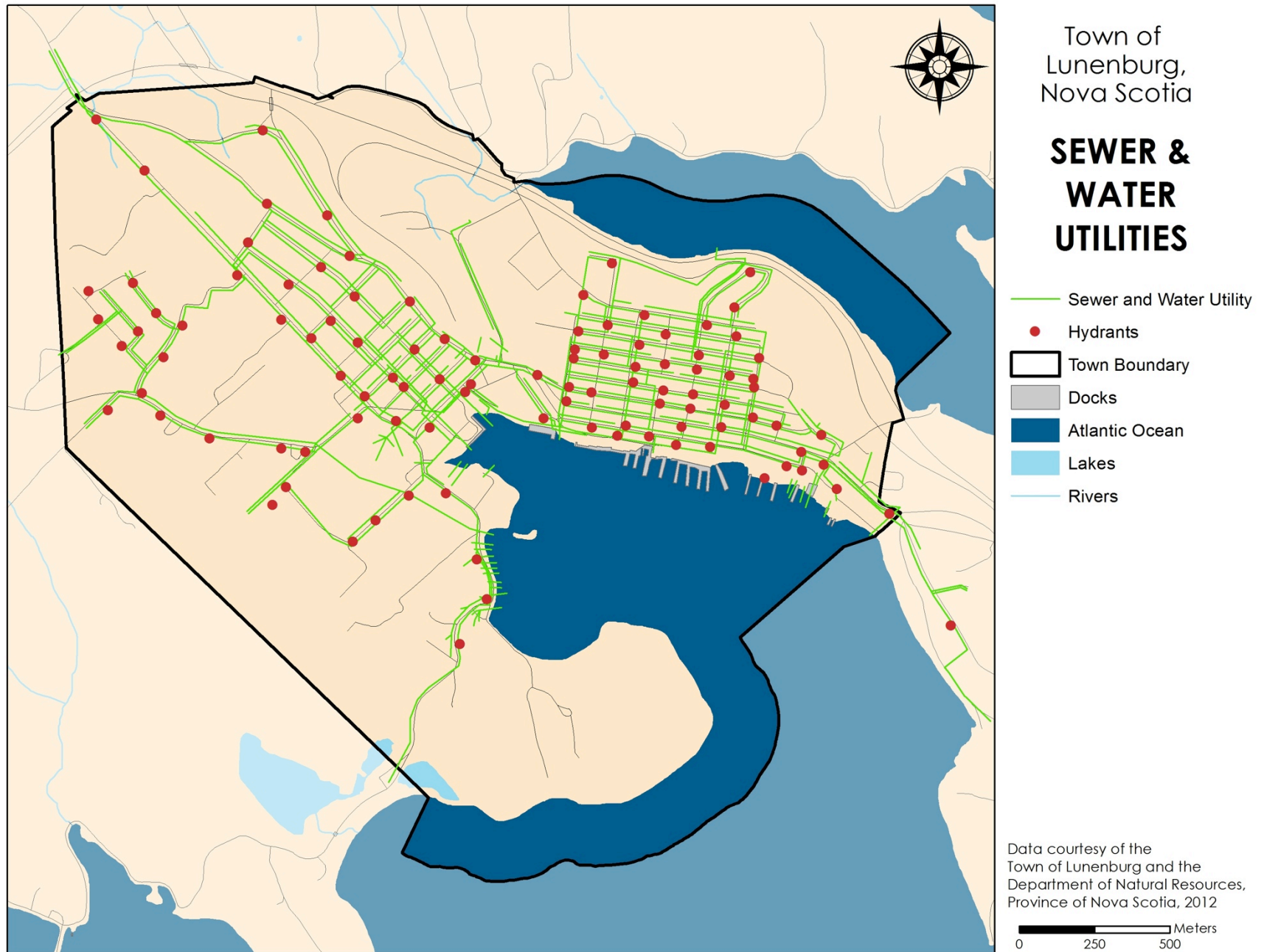


Appendix D: Built Environment Inventory

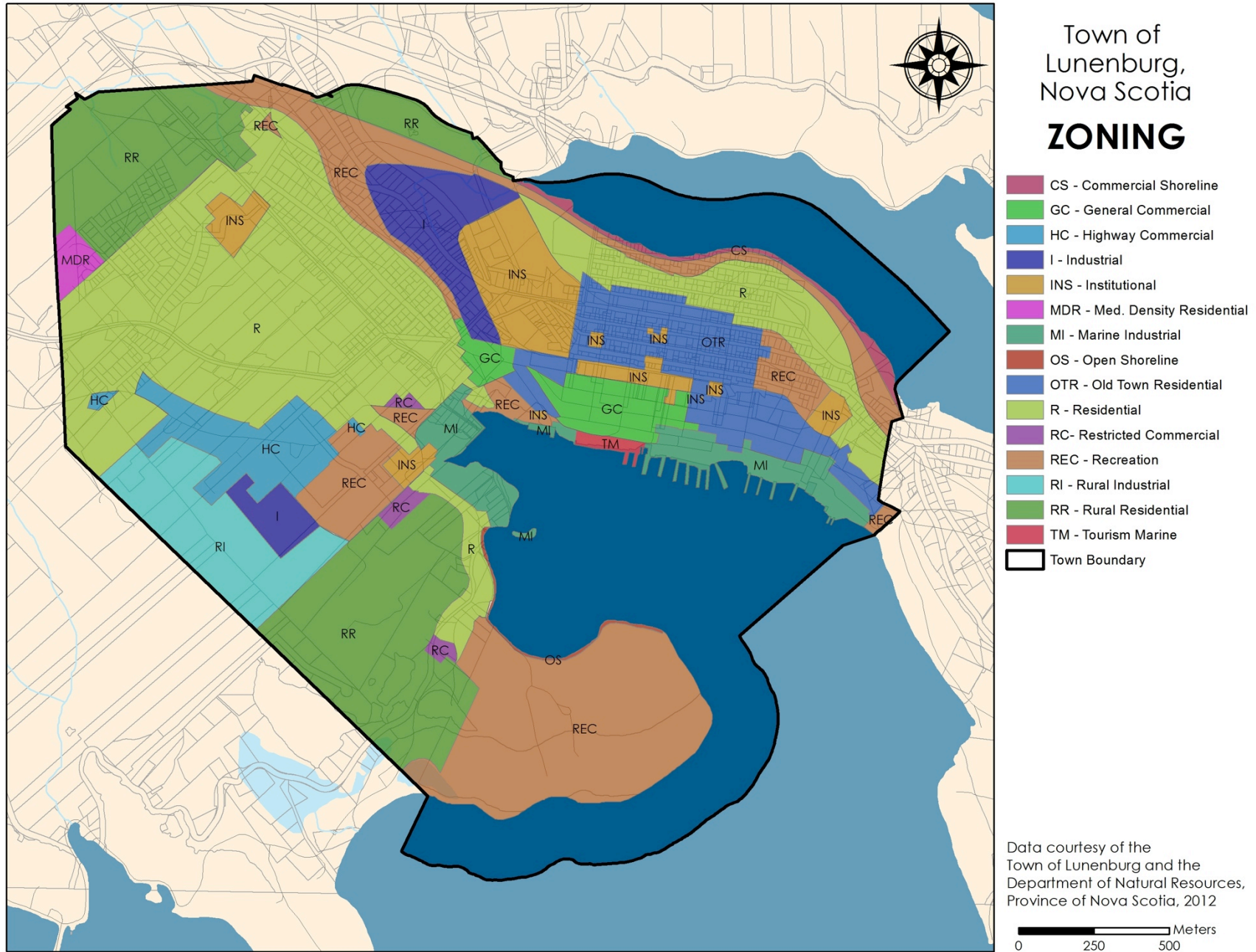


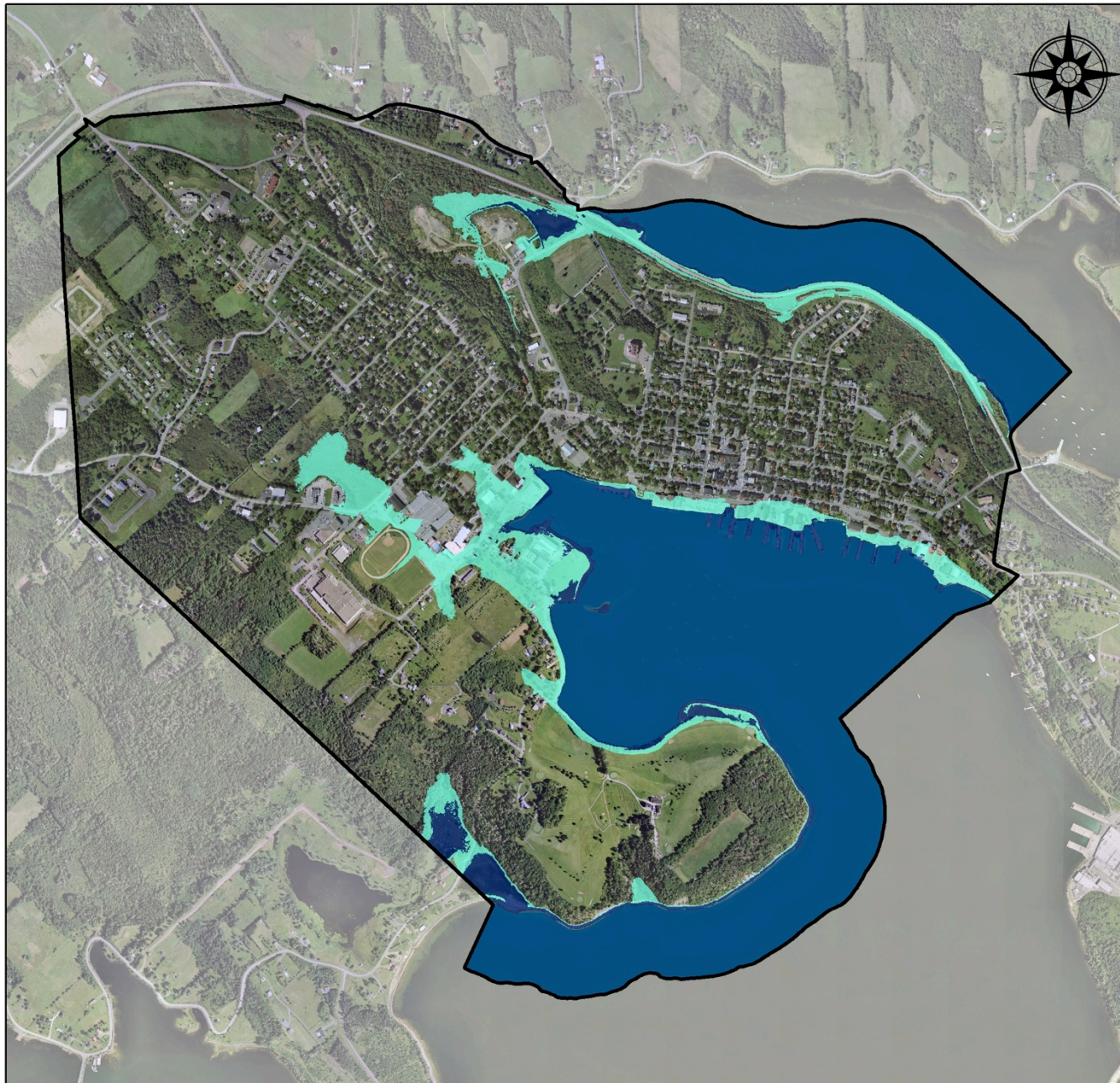
Appendix D: Built Environment Inventory





Appendix D: Built Environment Inventory





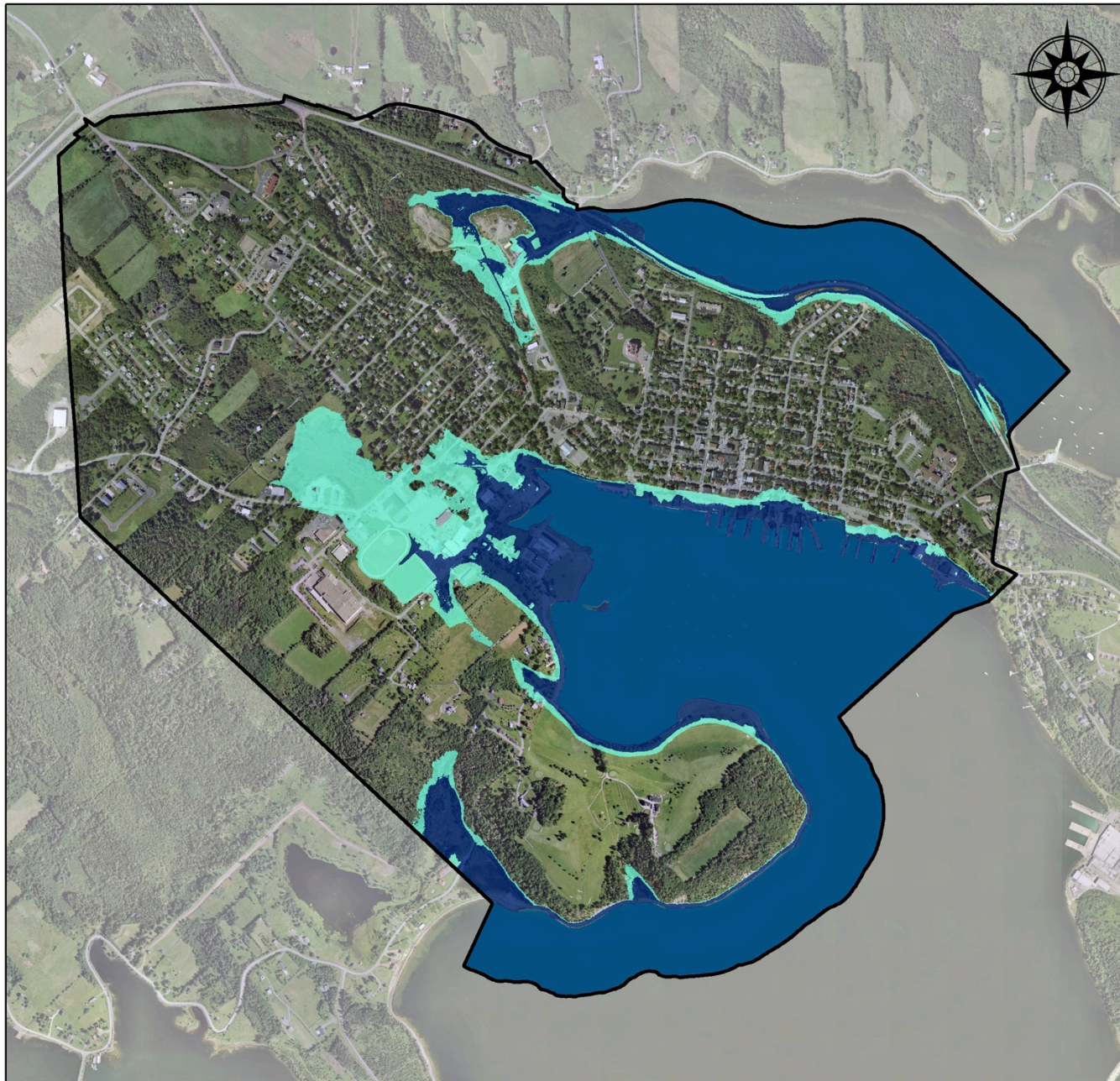
Town of
Lunenburg,
Nova Scotia

Scenario 1: SLR and Storm Surge Year 2025

- 1A: SLR (1.81m)
- 1B: Storm (3.44m)

Scenarios adapted from
Richards and Daigle (2011)
Data courtesy of the
Town of Lunenburg and the
Department of Natural Resources,
Province of Nova Scotia, 2012

0 250 500 Meters



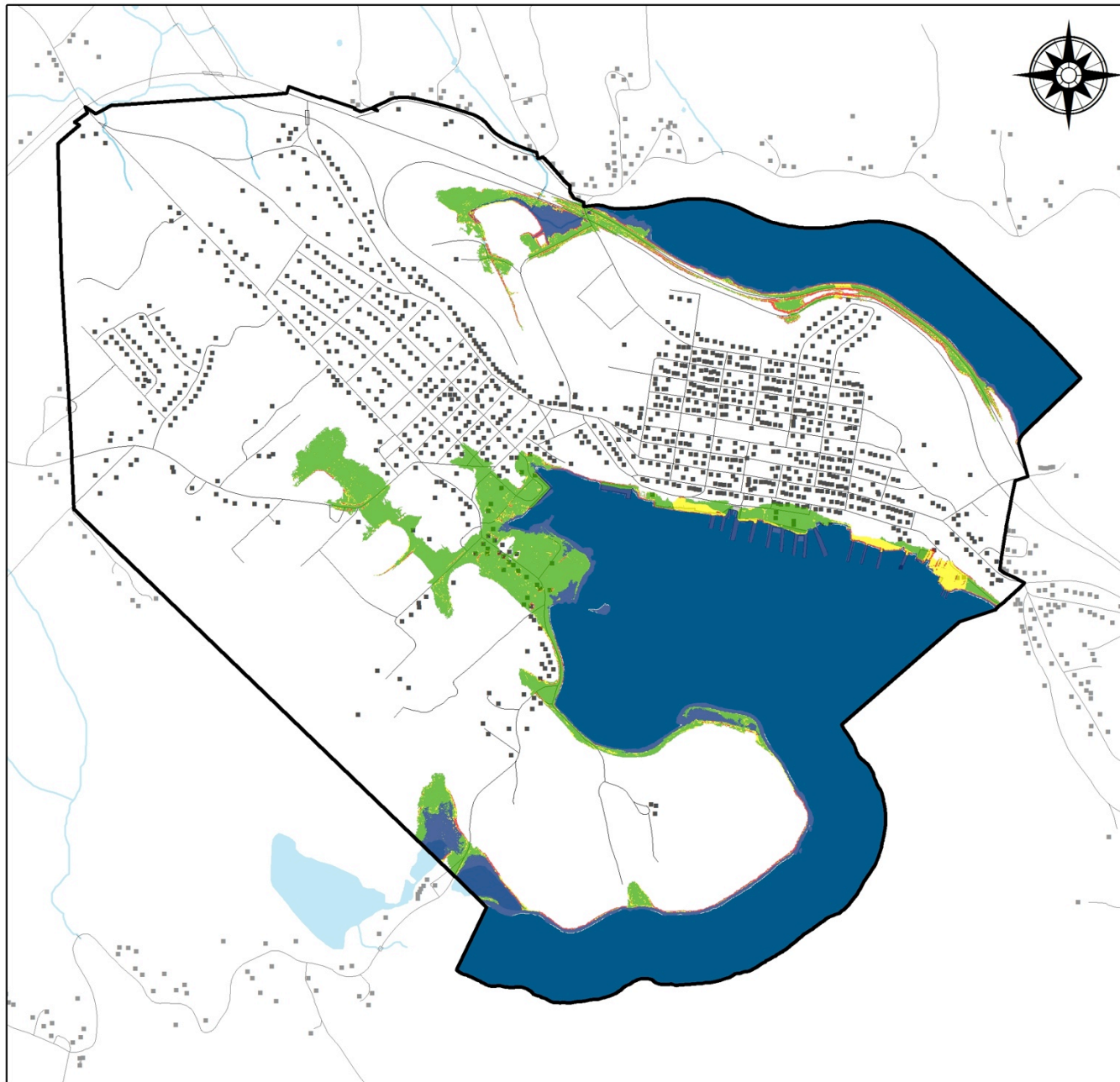
Town of
Lunenburg,
Nova Scotia

Scenario 2: SLR and Storm Surge Year 2100

- 2A: SLR (3.17m)
- 2B: Storm (4.8m)

Scenarios adapted from
Richards and Daigle (2011)
Data courtesy of the
Town of Lunenburg and the
Department of Natural Resources,
Province of Nova Scotia, 2012

0 250 500 Meters



Town of Lunenburg,
Nova Scotia

HAZARD MAP

**Areas Susceptible
to Erosion within
2025 Storm Surge
Scenario**

2025 SLR (1.81m)

Erosion Potential

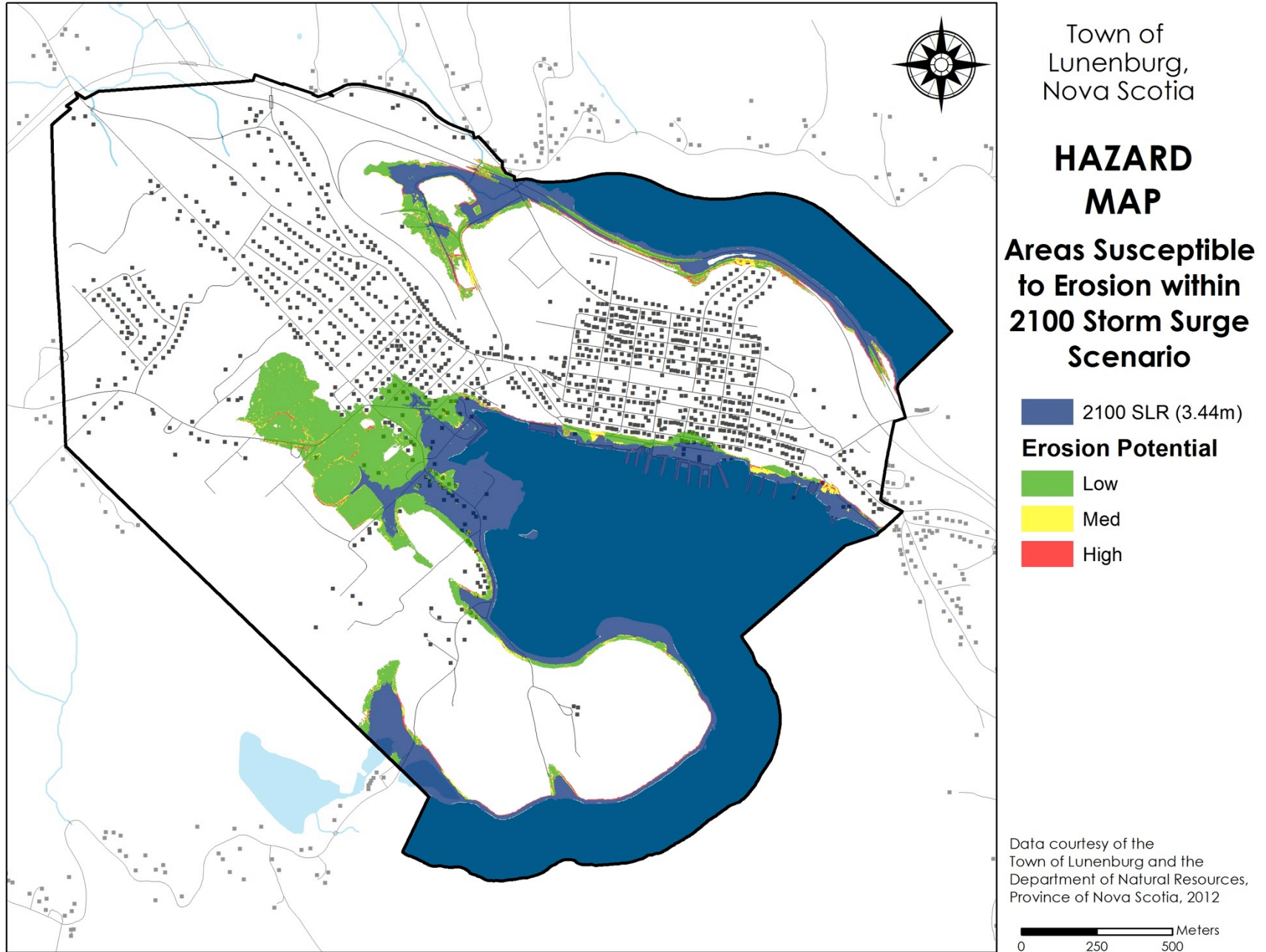
Low

Med

High

Data courtesy of the
Town of Lunenburg and the
Department of Natural Resources,
Province of Nova Scotia, 2012

0 250 500 Meters



Appendix G: Scenario Map

